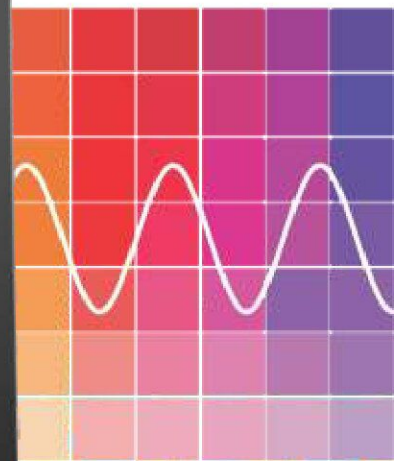
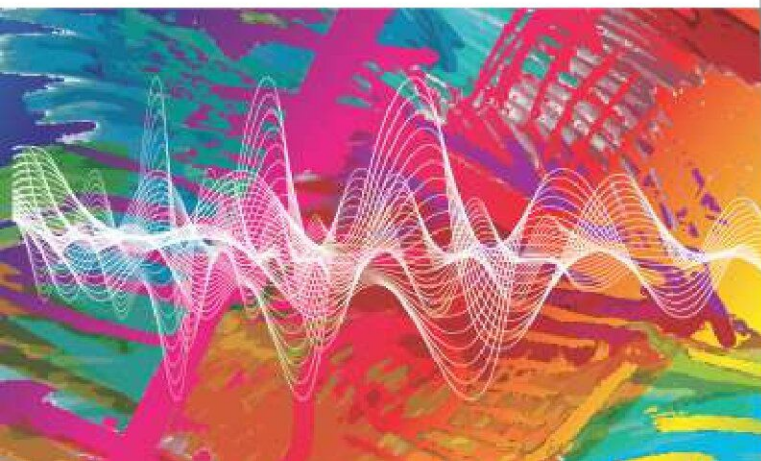


NUMERIC[®]

A Group brand | **legrand**



Onfiniti

1 - 10 kVA UPS

Reliable and Efficient
Single Phase UPS Solutions



Onfiniti

1 Phase UPS

Today's business continuity demands a cost-effective power protection solution, for ensuring Power Continuity and Power Quality with optimal Total Cost of Ownership (TCO). The UPS range of Onfiniti is a true online double conversion topology UPS, designed with IGBT based rectifier & inverter to suit customer requirements.

Onfiniti provides maximum protection and power quality for entry level servers, workstations, communication equipments, ATMs etc...

Product Snapshot

Power Rating	1 kVA - 10 kVA at 0.8 pf
Configuration	Tower
Voltage	220V/ 230V/ 240V
Input Power Factor	0.99



INTERNAL ISOLATION TRANSFORMER



Isolation transformer is a standard option in all Onfiniti FMI series models. This considerably reduces the footprint and requirement of additional cabling and switchgear. Isolation transformer provides maximum protection to the connected loads.

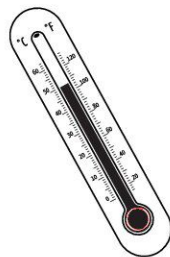
Display panel

The display interface provides real-time status of critical diagnostics and essential parameters like load demands, input voltage, battery status, etc.



50°C operation

Onfiniti UPS withstand high operating temperatures. They can operate at 40°C at 100% capacity and up to 50°C at 80% capacity.



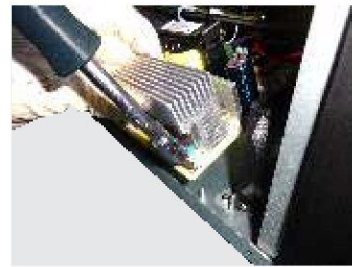
Flexible battery configuration

Battery blocks and their capacity can be configured by the user, as per the required variable backup time, based on the load connected.



Additional charger

The additional charger is a standard add-on option in Onfiniti UPS. It reduces the extra space/cabinet requirement. The additional charger is controlled by the UPS inverter controller and thus provides adequate protection from over voltage.



Conformal coating

Onfiniti UPS PC Boards comes as a standard with conformal coating. Conformal coating provides protection to the electronic circuits from harsh environments that may contain moisture and or chemical contaminants.



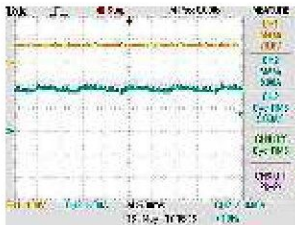
Polarity protection for battery connection

Polarity protection ensures that the battery connections are managed and installation is made easy.



Charger Ripple

The Onfiniti series is provided with adequate capacitor for minimum DC ripple < 5% of the battery carry, with this limit the battery life will be considerably increased



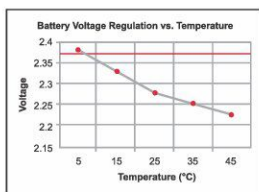
Over-voltage cut-off device

Over-voltage cut-off device protects the UPS from high input voltage and increases the stability and performance of UPS.



Temperature compensated battery charging

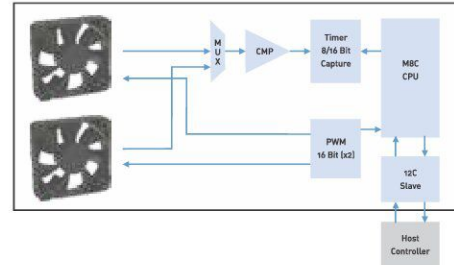
Onfiniti UPS automatically optimise the charging current, according to the operating temperature of the batteries. This feature extends the battery life considerably.



Temp. Compensated Charge Voltage — Fixed Charge Voltage

Intelligent fan operation

Intelligent fan operation manages and regulates fan speed, depending on the UPS requirements. It decreases power consumption and fan noise.



Advanced communication

The SNMP option in Onfiniti provides comprehensive UPS management and flexible configuration via web browser, NMS, Java Applet, Telnet, SNMP or Hyper Terminal. This technology provides reliable automatic event notification via E-mail, SMS*, WAP* and SNMP Trap. The included View Power software provides automatic shutdown for multiple PCs over the network.



Upgradable charger

The charger can be upgraded to extend the backup for over four hours.

Output voltage selection

Onfiniti UPS offer option to choose the output voltage (200V* / 208V* / 220V / 230V / 240V).

* with output de-rating

SPECIFICATION

Parameters	1 kVA	2 kVA	3 kVA	5 kVA	6 kVA	7.5 kVA	10 kVA
UPS details							
Topology	True On-line Double Conversion UPS						
Output Power Capacity	800 W	1600 W	2400 W	4000 W	4800 W	6000 W	8000 W
Specifications							
Input							
Phase	Single Phase						
Voltage	230V AC						
Voltage Range	160V - 300V AC						
	110V - 300V AC @ 60% load			110V - 300V AC @ 50% load			
Power Factor	0.99						
Current THD	<10%						
Battery	36V	72V / 96V		192 - 240V			
Battery Charging	Constant Current & Constant Voltage with Optional Temperature Compensated Battery Charging						
Output							
Nominal Output Voltage	220VAC / 230VAC / 240VAC ± 1%						
Frequency	50Hz ± 0.1Hz						
Frequency Synchronisation	47.5 to 52.5Hz						
THDv	<3% Linear Load			<2% Linear Load			
	<5% Non Linear Load			<5% Non Linear Load			
Efficiency							
AC/AC (overall efficiency)	Up to 90%			Up to 92%			
ECO Mode	Up to 97%						
Overload Capacity							
105 - 110%	10 min			3 min			
111 - 130%	1 min			30 sec			
Communication							
RS232	Available						
USB Com Port	Available						
Intelligent slot	Optional - SNMP / MODBUS / Dry Contacts						
Operating Temp	0~40°C Continuous						
Electrical							
Input Terminal Type	Terminal						
Output Terminal	4 x India type 6Amps (1KL)	6 x India type 6Amps(2KL) 6 x India type 6Amps +TB for 3kVA (3KL)		Input Breaker + Terminal			
Noise Level	< 50 dBA			< 58 dBA			
Features							
CONVERTER mode	Available						
Bypass Parameters Configurable	Available						
Display	LCD Display			LED + LCD Display			
Mechanical							
Ingress Protection (IP)	IP 20						
Standards							
EMC	EN 62040-2						
Safety	EN 62040-1						
Performance	IEC 62040-3						
Certification	CE						
Dimension for FM (W x D x H) in mm	145 x 405 x 235	190 x 435 x 335		260 x 482 x 488			
Dimension for FMI (W x D x H) in mm	190 x 465 x 465	190 x 435 x 595		260 x 482 x 871			
Weight in KG (FM / FMI)	6.2 / 21.3	11.5 / 35.5	12 / 43.5	18.9 / 51		22.8 / 63	

FM - Floor Mount UPS. FMI - Floor Mount UPS with Isolation transformer

Note : As Standard specification and design change from time to time, please ask for conformation of the information given in this publication