

Cafeteria Management

Canteen Management System



Uses of Cafeteria Management

- Fully Automated Cafeteria Process
- Hardware and Software Support

- Hardware

- User can order food through Face/Finger/Card

- Software

- Can manage reports

- The same data we can use while salary process through payroll
With use of third party payroll integration.

BioMax Cafeteria Management

- Define Items, Customize Menu and Menu Schedule
- Item-wise and Department-wise Report Generation
- Generate the item, menu customization, define time
- Food category master can manage employer & employee Contribution

Reports

- Branch wise, department, designation, employment type, location, Food Category

Benefits of Cafeteria Management

- Allows Admin to Focus on More Productive Tasks
- Allows Customization and Updating of Menu
- Reports for Faster Interpretation of Consumption
- Cost & Time Efficiency
- Fully automated process to get rid of human error
- Easy customization of menu
- Consumption report – Daily, weekly, monthly
- Shift wise reports

How Cafeteria Process Works?



BioMax Cafeteria Management



- Thoroughly solutions for all organizations like: Schools, Hospitals, Office Pantry, Hostels and mills.
- No need to carry the cash
- Face, Fingerprint and Card punches to order food.
- Reports to track consumption, display committed & consumed list.
- It manages meal orders, integration with access control.
- Time attendance integration to order & calculate the expected meal count.

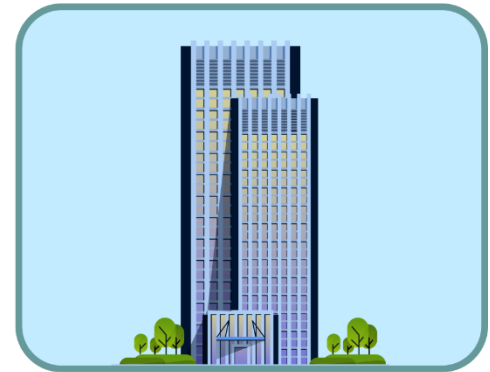
Target Customers



School/Colleage



Hospitals



Corporate Offices



Hotels

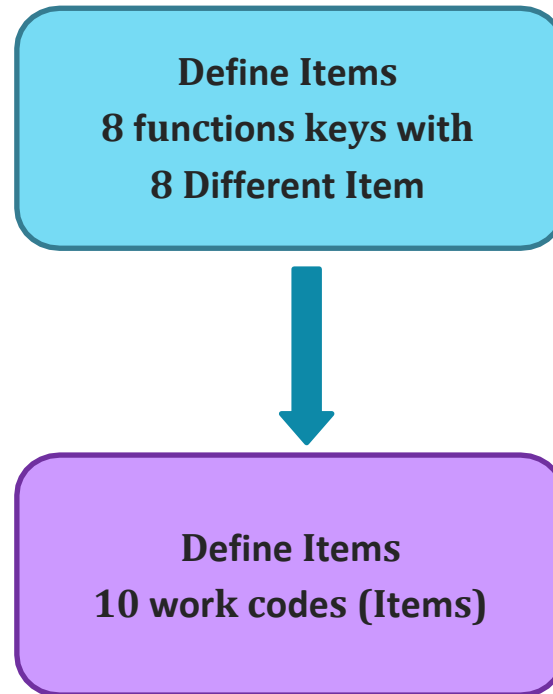


Factories/Mills



Hostel

Cafeteria Process



Determine Menus

- Determine Different Menus
- Like Breakfast, Lunch, Dinner

Breakfast

Lunch

Dinner

Features



Item Allocation as per timing

- First Item in Each Menu as Default Item
- Increased Efficiency with no larger Queues
- Punch restriction for serving fixed food or beverages.

Export to Payroll/Billing

- User Need not to worry About Paying their Dues Separately
- Various Formats Like CSV, XML, Text and Excel
- Helps to Save a Lot of Time for Corporates, Institutes and Others
- Export data to third party software with SQL, MySQL, and integration.
- Many formats like CSV, PDF and Microsoft Word

Printer Connectivity

- After punch immediately Print
- Printer Can be Connected Using
 - ✓ RS-232 Serial Port



Reports

Timesheet Reports

- Various reports – Daily, Weekly, Monthly
- Branches, Departments, locations, designation wise reports
- Consumption Food Reports
- Option to Print and Export Report
- Shift wise consumption report
- Employee wise consumption report

Report File Formats

- Export Report in Various File Formats
 - PDF
 - MS Excel (CSV)
 - MS-Word

Cafeteria Consumption Summary Report

Cafeteria Consumption Summary Report							
23-Oct-2020 To 23-Oct-2020							
Branch : Biomax							
Employee Code	Employee Name	Department	Afternoon - Tea	Break-Fast	Dinner	Lunch	Tea
3	Rushita	Account Department	1	2	1	0	3
4	Punit	Finance Department	3	3	1	1	3
5	Ritu	Graphic Design Department	2	4	2	3	3
1	Ketul	IT Department	2	2	1	1	1
2	Krunal	Sales/Marketing Department	3	2	3	2	3
Total			11	13	8	7	13

Cafeteria Contribution Report Department

Monthly Contribution Report			
22-Oct-2020 To 22-Oct-2020			
Branch : Biomax			
Department : Account Department			
Employee Code	Employee Name	Staff Contribution	Employer Contribution
3	Rushita	55	80
Department : Finance Department			
Employee Code	Employee Name	Staff Contribution	Employer Contribution
4	Punit	80	95
Department : Graphic Design Department			
Employee Code	Employee Name	Staff Contribution	Employer Contribution
5	Ritu	75	100
Department : IT Department			
Employee Code	Employee Name	Staff Contribution	Employer Contribution
1	Ketul	60	85
Department : Sales/Marketing Department			
Employee Code	Employee Name	Staff Contribution	Employer Contribution
2	Krunal	60	85
	Total	330	445

Cafeteria Department Wise Consumption Report

Cafeteria Employee Wise Consumption Report			
22-Oct-2020 To 22-Oct-2020			
Branch : Biomax			
Department	Account Department		
Employee Code	3	Employee Name	Rushita
SL No.	Date	Time	Meal Type
1	22-Oct-2020	07:00	Tea
2	22-Oct-2020	09:01	Break-Fast
3	22-Oct-2020	12:00	Lunch
4	22-Oct-2020	15:00	Afternoon - Tea
5	22-Oct-2020	19:01	Dinner
Total Tea : 1 Total Break-Fast : 1 Total Lunch : 1 Total Afternoon - Tea : 1 Total Dinner : 1			

Cafeteria Daily Consumption Report Department

Cafeteria Consumption Summary Report							
22-Oct-2020 To 22-Oct-2020							
Branch : Biomax							
Employee Code	Employee Name	Department	Afternoon - Tea	Break-Fast	Dinner	Lunch	Tea
3	Rushita	Account Department	1	1	1	1	1
4	Punit	Finance Department	1	1	1	1	1
5	Ritu	Graphic Design Department	1	1	1	1	1
1	Ketul	IT Department	1	1	1	1	1
2	Krunal	Sales/Marketing Department	1	1	1	1	1
Total			5	5	5	5	5

Cafeteria Daily Consumption Summary Report

Cafeteria Daily Consumption Summary Report

23-Oct-2020 To 23-Oct-2020

Branch : Biomax					
Date	Afternoon - Tea	Break-Fast	Dinner	Lunch	Tea
23-Oct-2020	12	13	11	11	13
Total	12	13	11	11	13

Cafeteria Daily Detailed Consumption Report

Cafeteria Daily Detail Consumption Report						
22-Oct-2020 To 22-Oct-2020						
Branch : Biomax						
Date	22-Oct-2020					
SN	Employee Code	Employee Name	Department	Designation	Time	Meal Type
1	1	Ketul	IT Department	IT	07:00	Tea
2	1	Ketul	IT Department	IT	09:00	Break-Fast
3	1	Ketul	IT Department	IT	12:00	Lunch
4	1	Ketul	IT Department	IT	15:00	Afternoon - Tea
5	1	Ketul	IT Department	IT	19:01	Dinner
Total Tea : 1 Total Break-Fast : 1 Total Lunch : 1 Total Afternoon - Tea : 1 Total Dinner : 1						

Cafeteria Monthly Consumption Report Department

Cafeteria Consumption Summary Report							
22-Oct-2020 To 22-Oct-2020							
Branch : Biomax							
Employee Code	Employee Name	Department	Afternoon - Tea	Break-Fast	Dinner	Lunch	Tea
3	Rushita	Account Department	1	1	1	1	1
4	Punit	Finance Department	1	1	1	1	1
5	Ritu	Graphic Design Department	1	1	1	1	1
1	Ketul	IT Department	1	1	1	1	1
2	Krunal	Sales/Marketing Department	1	1	1	1	1
Total			5	5	5	5	5

◆ **THANK YOU** ◆