




TW 3300 Door Lock is made of High-Quality stainless steel and works on Mifare Technology. is our latest and most popular apartment lock in 2018, applied for luxury apartment or high-end commercial building

TW - 3300


- ❖ Lock Body Color: Black / Silver
- ❖ Lock Body Material: Panel Aluminum Alloy/ Handle Zink Alloy, Key Zink Alloy
- ❖ Product Size: 178mm x 65mm x 26mm
- ❖ Electroplating Process: Anti- Fingerprint Treatment
- ❖ Net Weight of product: 2.1KG
- ❖ Unlocking Methods:
 - TT App Lock
 - IC Card
 - Mechanical Key
 - Fingerprint
- ❖ Supported Mobile Software: Android 4.3 or Higher & iOS 5.0 or Higher
- ❖ Number of fingerprint storage: 200 Nos
- ❖ Supported card Type: MIRAFI
- ❖ Power Supply: 4Pcs- Alkaline Dry battery
- ❖ Emergency Charging: Via MicroUSB Port
- ❖ Unlocking after full charge: 9000 Times
- ❖ Max. Standby Time: 01 Year
- ❖ Low Battery Alarm: YES
- ❖ Button Type: Capacitive Touch Button
- ❖ Unlocking Time: 1.5 Seconds

Security Design Core Function


We are very cautious about your safety




Fingerprint unlock




Password unlock




App unlock



Card unlock



Key unlock



Low battery reminder



Bluetooth door lock



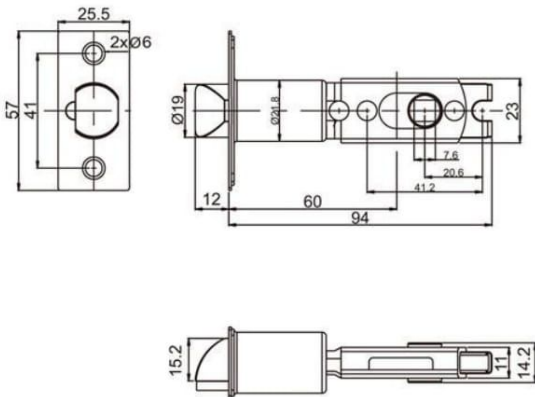
Bluetooth
Bluetooth 4.0 (transmit protocol)

SCHNER All new third generation smart chip

10+ Over 10000 times certificate of reliability test

Single Latch Mortise:

Easy to install or renovate, the knob lock hotel could be upgraded without drilling any extra hole.



Mobile App Management

The users can easily add or delete permanent and temporary users. Lock or unlock your door with a single tap – either on your smartphone app or through a connected smartwatch.



Real-Time Records

Records every entry of the users. Activity logs grant the users to access real-time data.



Smart Touch Screen Keypad

The lock resistive touchscreen is reliably fast to unlock.



User Record Management and Inquiries

Records every entry of the users. Activity logs grant the users to access real-time data.



Emergency Reserved Keys

Physical key will be provided in case of any emergencies occurred.



LED Backlight

Indicates the status of your door lock (locked/unlocked).



Time Limited Passcodes

It enables the user to generate time-limited passcodes remotely.



Auto Lock 5 Seconds

Auto-lock feature enables to unlock for a specific period of time.



Multi-user Management

Schiner Locks can store up to unlimited passcodes and you will not often have to delete or add a code, which makes the management very easy. It's being able to use by a large but stable group of individuals on a regular long-term basis.



Bluetooth Technology

BLE 4.1 Technology allows the users to access the lock and to communicate with authorized smartphones.

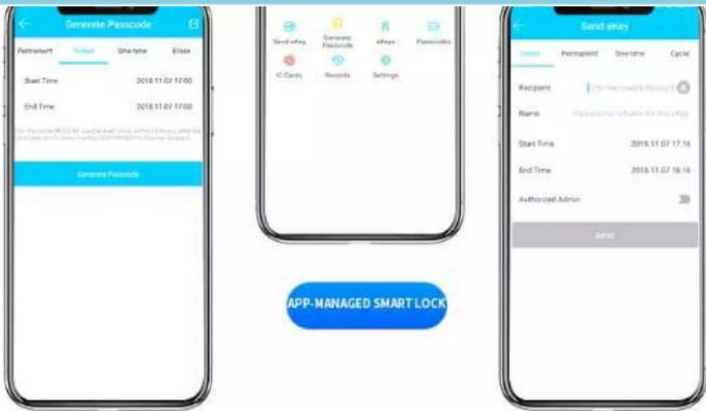


Real-Time Battery Indicators

The real-time battery indicator ensuring that your lock never dies on.

Can Be Directly Replaced With a Ball Lock





APP-MANAGED SMART LOCK

REMOTE PASSWORD
/E-KEY FROM APP

E-KEY



Equipped with a gateway to achieve remote management



- App send key
- App send password
- App key management
- App password management
- Appic card management
- App operation record

