



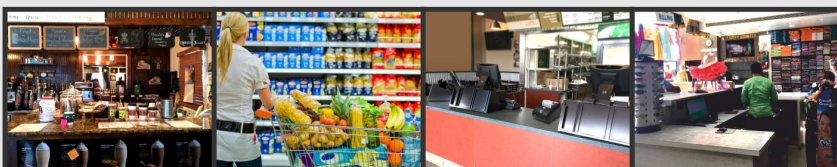
## LP 46 Plus | Label Printer

### FEATURES

- Durable And Strong Design
- High Ribbon Capacity Of 300 Meters
- Multiple Interface Options Of USB, Serial And Ethernet

### LP 46 PLUS ADVANTAGE

High Memory capacity of 128 MB Flash and 64 MB SDRAM  
Supports multiple interfaces  
Supports both 0.5" and 1" Ribbon core



TVS ELECTRONICS LIMITED  
[www.tvS-e.in](http://www.tvS-e.in)

For Sales Enquiry

☎ 044 6688 8822

✉ [sales-support@tvS-e.in](mailto:sales-support@tvS-e.in)

For Service Enquiry

☎ 1860 425 2078

✉ [support@tvS-e.in](mailto:support@tvS-e.in)