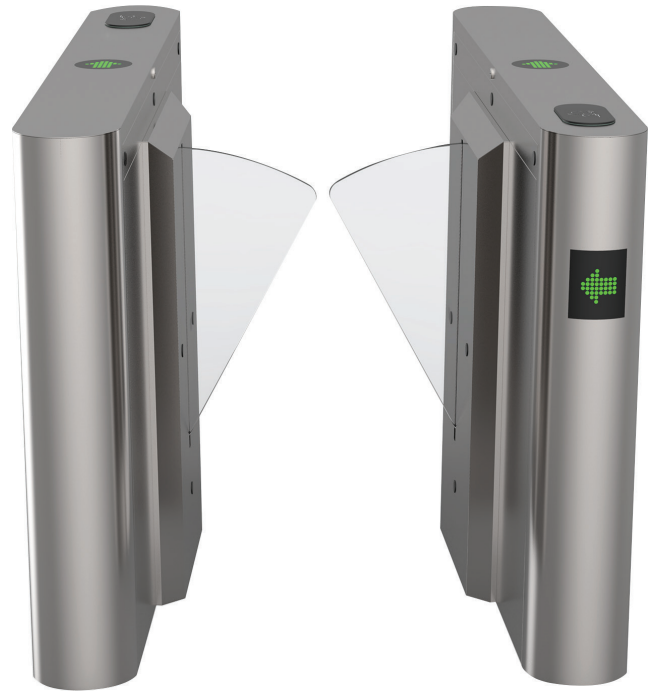


Single-Lane Flap Barrier

FB-Y-1000



Size : 1400*280*950mm

Sensor pairs : 6 pairs

Pass rate : 35p/m

Pass width : 550mm

Input voltage : 100V~240V

Motor type : DC brushless motor

Environment : -20~ +70°C

Power supply : 24V 150W

Net weight : 60kg

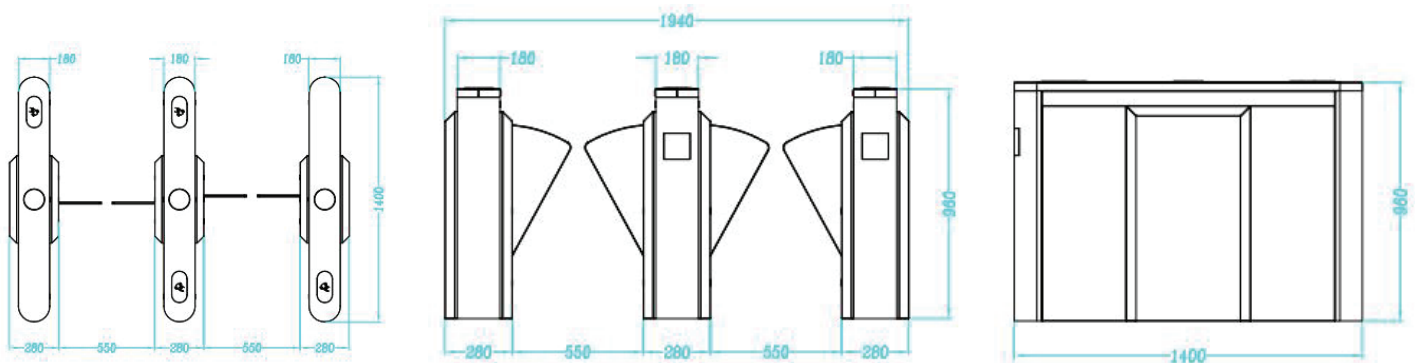
IP Rating : 56

MCBF : 5 Million

Features

- Reasonable and reliable design, low noise, smooth operation and long service life;
- With function of opening doors automatically under power-off state to meet the need of fire-fighting passage;
- With functions of anti-tail, anti-reverse pass and so on;
- Card can be set "with memory" or "without memory" functions;
- With automatic reset function, i.e. after having access to the gate, the gate automatically restores to the locked state if not pass within the time set;
- With infrared anti-clip function (anti-clip when gate is open or running);
- Compatible with IC, ID card, scanning and face recognition,etc.
- Two modes of operation are available: open or closed.
- Various working modes are available, including two-way card reading and one-way card reading,etc.

Dimension



Disclaimer: Brief specifications are mentioned here. Specifications may change without prior notice. Customers are advised to check with us before purchase. Actual product may differ slightly to that depicted for ongoing product development

Visit Us at: www.esslsecurity.com